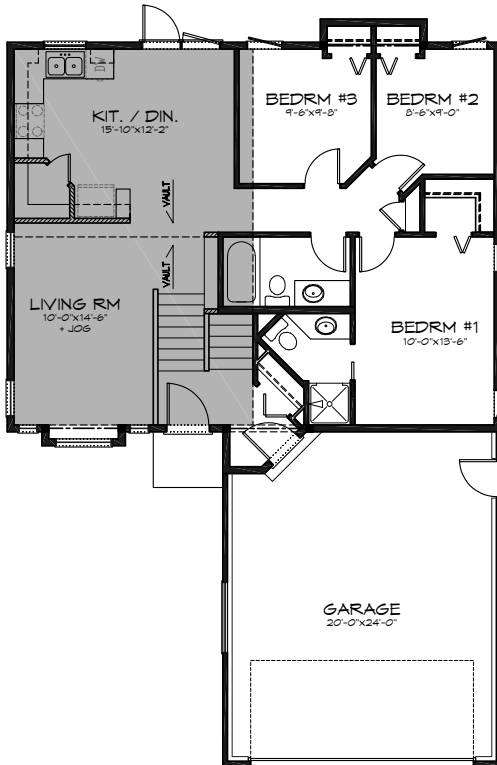


Welcome to

1115 KOROL GREEN – HAMPTON VILLAGE



FRONT ELEVATION



MAIN FLOOR PLAN
1026 SQ FT

\$323,900

Features

- 1,026 sq ft bi-level - 3 bedrooms - 2 bathrooms
- Sides park/green space
- Large pie lot
- Triple pane windows
- Vinyl siding
- Large kitchen with granite countertops and stained custom maple cabinets
- Large pantry
- Hardwood, tile and carpet through main floor
- Ensuite off master bedroom
- 9 ft. basement
- Upgraded basement water protection barrier
- High efficient furnace and hot water heater
- New Home Warranty of Saskatchewan
- 35 year shingles
- Dishwasher & OTR microwave

Homes By



PHONE: (306) 477-2267

GARY: (306) 260-2353

FAX: (306) 477-2258

BOX 1272 SASKATOON, SASK. S7N 3N9

www.campbellhomes.ca

1115 KOROL GREEN

