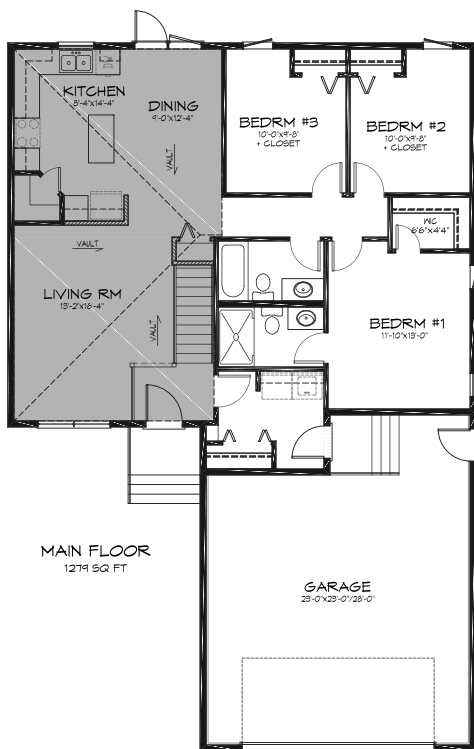


Welcome to

1423 PATRICK CRESCENT – WILLOWGROVE



FRONT ELEVATION



\$378,900

Features

- 1,279 sq ft bungalow - 3 bedrooms
- Quiet crescent location in the final phase of Willowgrove
- Triple pane windows
- Acrylic stucco
- Cottage vault on main floor
- Large kitchen with stained custom maple cabinets
- Maple interior railings with metal spindles
- Laminate, Lino and carpet through main floor
- Large ensuite off master bedroom
- Large walk-in master closet
- 9 ft basement
- Upgraded basement water protection barrier
- 30 year shingles
- Dishwasher & OTR microwave
- High efficient furnace and hot water heater
- New Home Warranty of Saskatchewan

Homes By



PHONE: (306) 477-2267

ROB: (306) 291-0169

FAX: (306) 477-2258

BOX 29004 SASKATOON, SASK. S7N 4Y2

www.campbellhomes.ca

