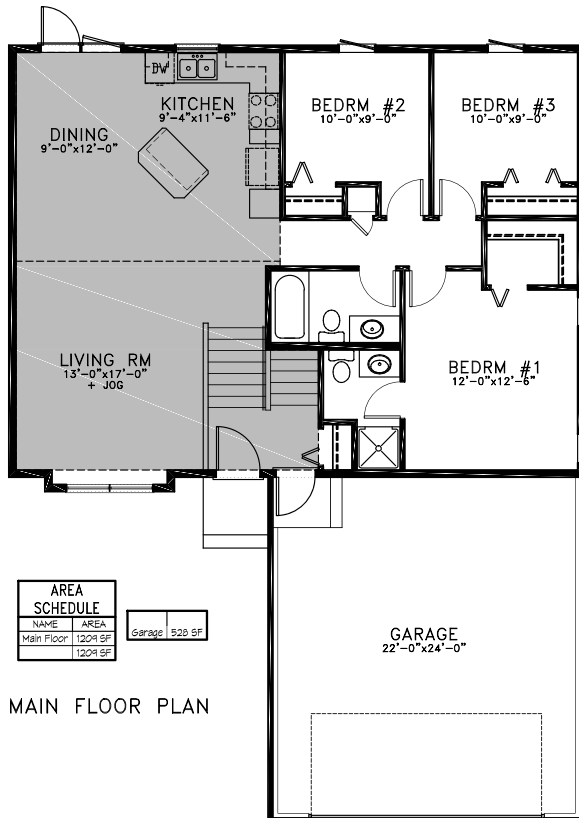


Welcome to

702 REDWOOD CRESCENT - WARMAN



FRONT ELEVATION



\$327,900

Features

- 1,209 sq ft bi-level - 3 bedrooms
- Quiet location in Warman
- Large corner lot with back lane access
- Close to lake/green space
- Triple pane windows
- Acrylic stucco on exterior
- Large kitchen with granite countertops and stained custom maple cabinets
- Hardwood, tile and carpet
- Ensuite off master bedroom
- Large walk-in master closet
- 9 ft. basement
- Upgraded basement water protection barrier
- High efficient furnace and hot water heater
- New Home Warranty of Saskatchewan
- 35 year shingles
- Fridge, stove, dishwasher & OTR microwave

Homes By



PHONE: (306) 477-2267
GARY MULLIGAN: (306) 260-2353
RYAN GAY: (306) 292-9499
MARY ANN CHASE: (306) 220-6906
BOX 1272 SASKATOON, SASK. S7K 3N9

FAX: (306) 477-2258
RYAN KILLOH: (306) 321-2606
JANICE DONNELLY: (306) 222-0903

www.campbellhomes.ca