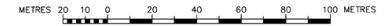


S.E. 1/4 Sec. 19 - 36 - 4 - 3

**A**  
Reg'd Plan No. FD-4196

**ROSEWOOD**

PLAN SHOWING PROPOSED SUBDIVISION OF PART OF  
**N.W. 1/4 SEC. 17 -**  
**TWP. 36 - RGE. 4 - W.3rd MER.**  
**SASKATOON, SASKATCHEWAN.**  
 BY : R.A. WEBSTER, S.L.S.  
 2011



*R.A. Webster*  
 Saskatchewan Land Surveyor  
 June 24th, 2011  
 Revised: October 12th, 2011

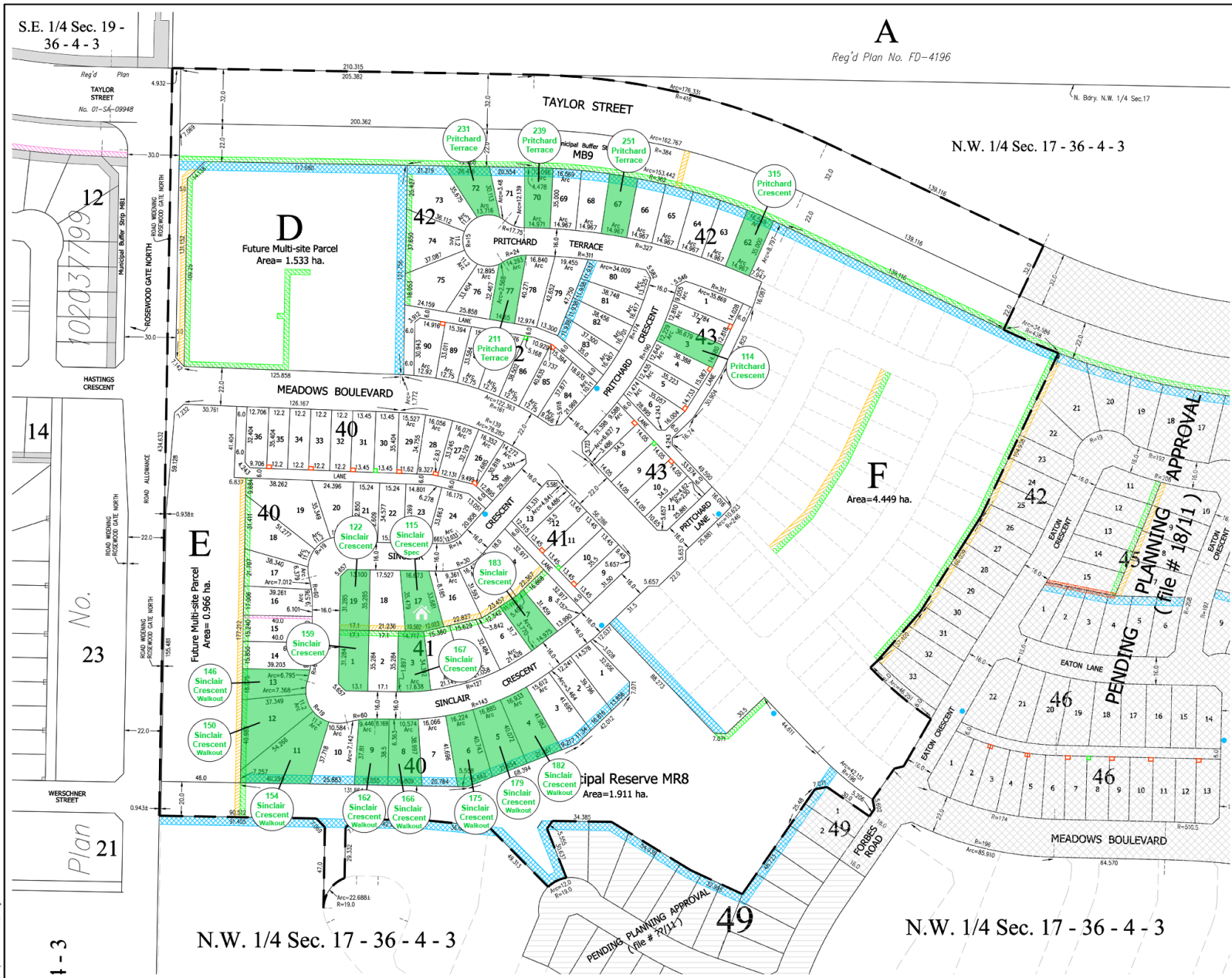
**LEGEND**  
 Distance dimensions shown are in metres and decimals thereof.  
 Distances are approximate and may vary by ±2.0 metres.  
 Area shown are approximate and may change upon completion of survey.  
 Portion of this plan proposed for subdivision is outlined with a heavy broken line, and contains 19,940± hectares (49,03± acres).  
 Distances on curves are arc lengths.  
 This proposed subdivision may be surveyed in phases.

- : Existing easements are shaded gray
  - : 3m SaskEnergy
  - : 3m SaskPower, SaskTel, and Show Cable Systems
  - : 5m SaskEnergy, SaskPower, SaskTel, and Show Cable Systems
  - : 1.5m SaskPower
  - : City of Saskatoon - for water & sewer
  - : 2.0m x 2.0m SaskPower easement for transformer
  - : 2.75 x 2.0m SaskPower easement for pedestal
- Note: Easements requirements shown in proposed Parcel F will not be implemented until Parcel F is developed into residential lots.
- : • indicates Mail Box location.

EXAMINED: CASABLANCA HOLDINGS INC. - OWNER  
*[Signature]*  
 Corporate Seal

EXAMINED: CITY OF SASKATOON  
 Approved under the provisions of Bylaw No. 6537 of the City of Saskatoon.

: General Manager of the Community Services Department  
 Date: \_\_\_\_\_, A.D. 2011.



102037799  
 12  
 HASTINGS CRESCENT  
 14  
 No. 23  
 WERSCHNER STREET  
 Plan 21  
 1-3

N.W. 1/4 Sec. 17 - 36 - 4 - 3

N.W. 1/4 Sec. 17 - 36 - 4 - 3

FILE: p140404-bldg\_4.dwg